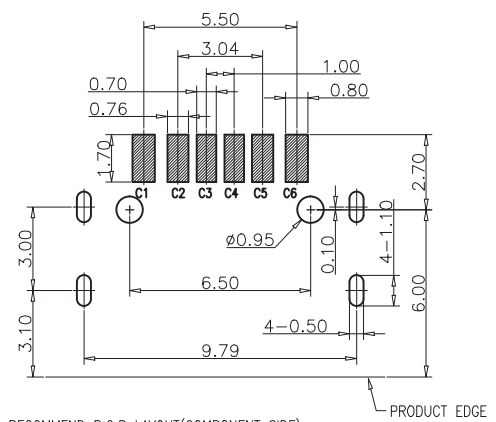
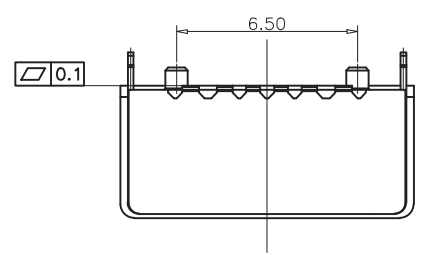


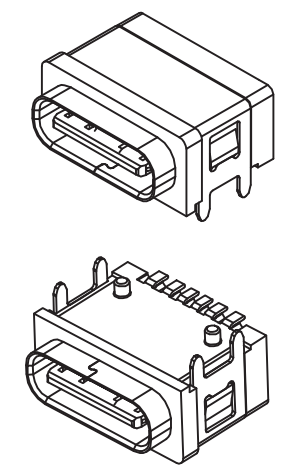
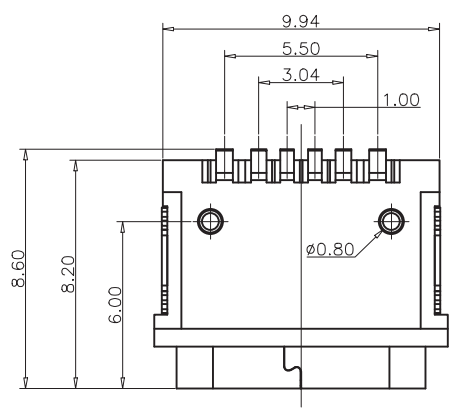
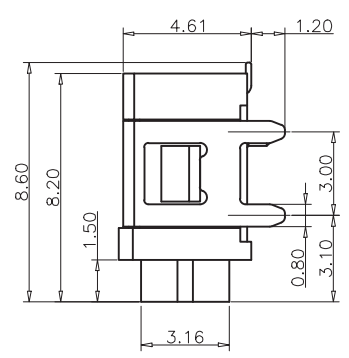
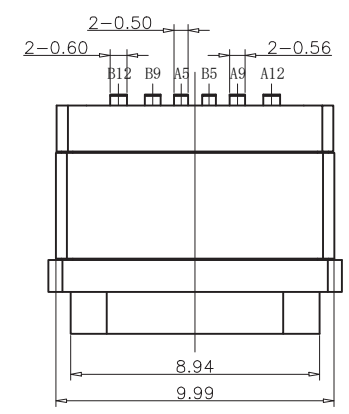
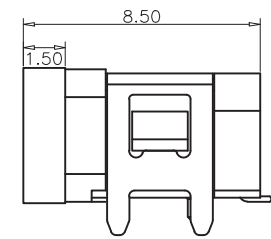
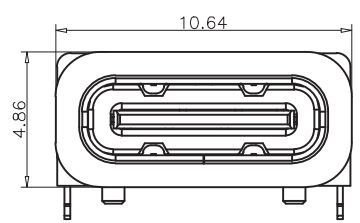


REV.	ZONE	DESCRIPTION	DESIGN	DATE
B		NEW		

加防水圈示意图



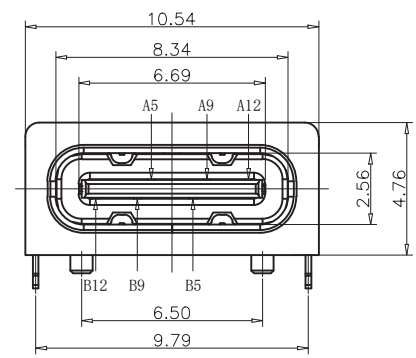
RECOMMEND P.C.B LAYOUT (COMPONENT SIDE)  
TOLERANCE FOR PCB LAYOUT IS ±0.05



- NOTES:  
SPECIFICATION:  
1. CURRENT RATING: 3.0A MAX  
2. VOLTAGE: 100 VAC  
3. TEMPERATURE RANGE: -30°C~+85°C  
4. CONTACT RESISTANCE: 40 MILLIONHM MAX  
5. INSULATION RESISTANCE: 100 MEGOHMS MIN  
6. INSERTION FORCE: 5N~20N  
7. UNMATING FORCE: 8N~20N  
8. DURABILITY: 10000 CYCLES  
9. WATER PROOFNESS: THIS PRODUCT IS BASED ON IPX7.

TABLE :

NO	PART	Q'TY	Material
1	SHELL	1	STAINLESS STEEL, NI PLATED
2	CONTACT	6	COPPER STEEL, TIN/AU/NI PLATED
3	MID PLATE	1	STAINLESS STEEL, NO PLATING
4	1MD HOUSING	1	HIGH TEMPERATURE RESISTANT PLASTIC BLACK UL94 V-0
5	2MD HOUSING	1	HIGH TEMPERATURE RESISTANT PLASTIC BLACK UL94 V-0
6	SHIELDING PLATE	1	STAINLESS STEEL, NI PLATED



PIN ASSIGNMENT:

PIN NO	A1&B12	A4&B9	A5	A5	A9&B4	A12&B1
SIGNAL NAME	GND	VBUS	CC1	CC2	VBUS	GND
PCB PAD NO.	C1	C2	C3	C4	C5	C6

X. ±0.50	X.* ± 2*	UNITS	TITLE: Type-C 防水母座6P (外壳4脚插板)
.X ±0.30	.X* ± 1*	mm	
.XX ±0.10	.XX* ± 0.5*	MAT'L	
.XXX ±0.05			
		FINISH	APPD:
		Q'TY	CHKD:
			DR:
			DWG NO.:
			SCALE SHEET REV.
			1/1 1/1 A1