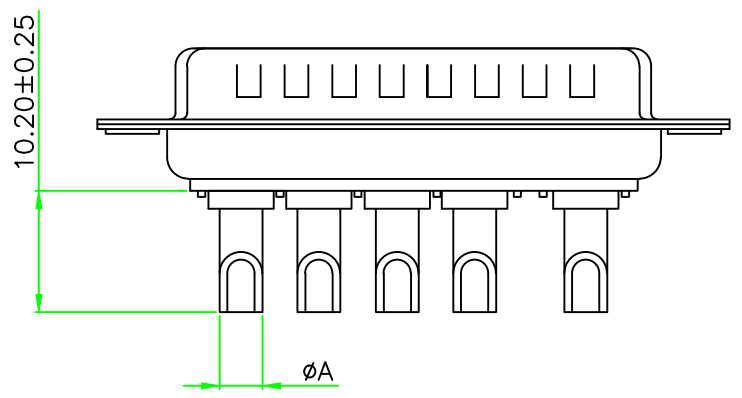
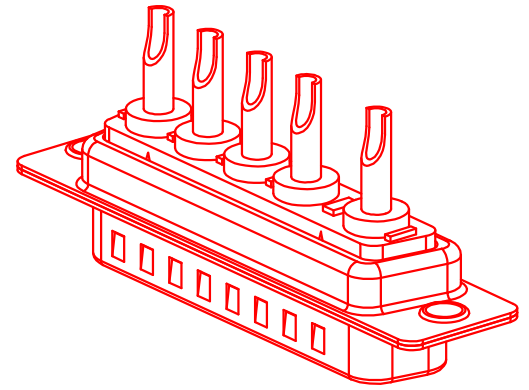
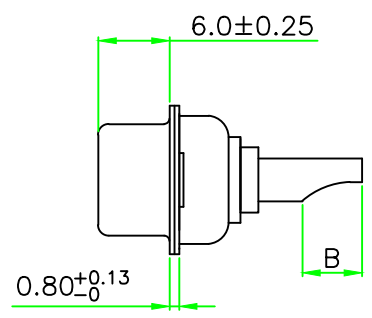
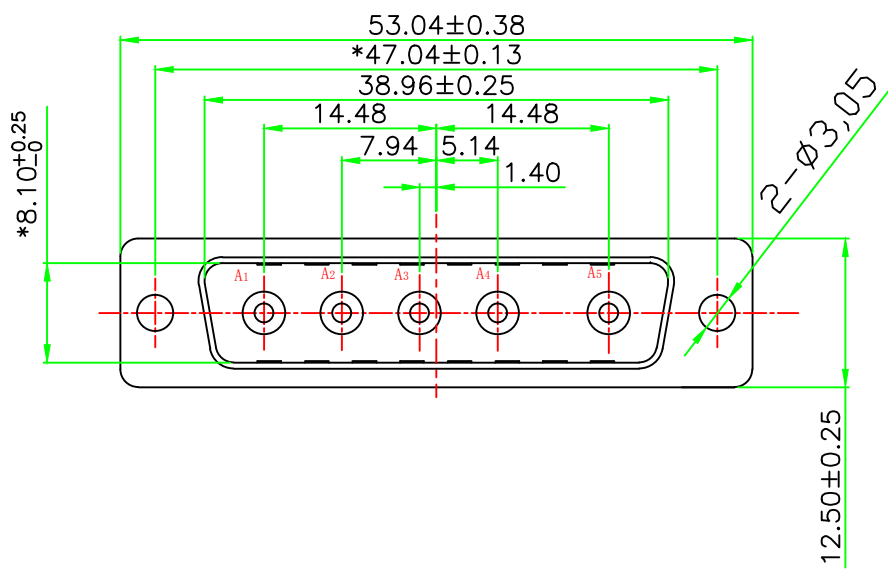


“\*” Pivot Dimension

RoHS Component

PO(X)	A	B	WIRE	CURRENT RATING (A)
1	2.5	4.5	12#	10
2	3.6	5.0	10#	20
3	4.4	5.5	8#	30
4	5.5	5.5	6#	40



MATERIALS AND FINISH  
 SHELL: STEEL OR COPPER ALLOY MATERIAL, Tin/Ni OR Au FINISHED.  
 CONNECTOR INSULATOR: PBT THERMOPLASTIC, 30% GLASS FILLED, UL 94V-0 RATED.  
 HIGH POWER CONTACT : COPPER ALLOY MATERIAL, GOLD PLATED.  
 ELECTRICAL CHARACTERISTICS  
 HIGH POWER CONTACT CURRENT RATING: 10, 20, 30 OR 40 AMPS.  
 THE WORKING VOLTAGE: 300V.  
 HIGH POWER CONTACT RESISTANCE: 2.7 MILLIOHMS MAX.  
 DIELECTRIC WITHSTANDING VOLTAGE: 1000 V AC FOR 1 MINUTE.  
 INSULATION RESISTANCE: 2000 MEGAOHMS MIN.  
 TEMPERATURE RATING: -55° ~ +125° .

<b>TOLERANCE:</b> XX ±0.38 XX ±0.25 XXX ±0.13 X° ±5°    XX° ±1°	<b>DRAWN BY :</b> _____	<b>DATE :</b> 2009.12.10	<b>PART NAME:</b> 5W5 公 电流焊线式传统铆合	
	<b>CHECKED BY:</b> _____	<b>DATE :</b> 2011.05.11	<b>DRAW NO.</b> _____	<b>PART NO.</b> _____
UNIT: mm [inch]	<b>APPROVED BY:</b> _____	<b>DATE :</b> 2011.06.09	<b>REMARK</b> _____	<b>MOLD NO.</b> _____
SCALE: 1:1    SIZE: A4				