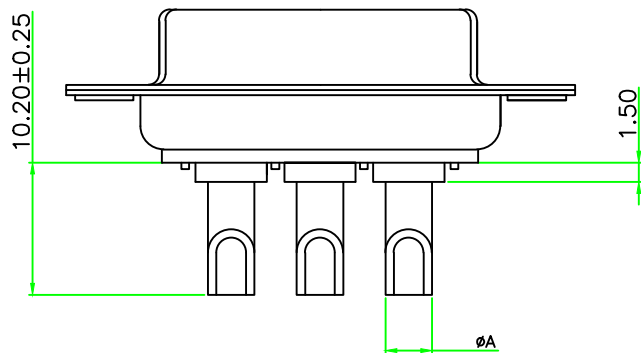
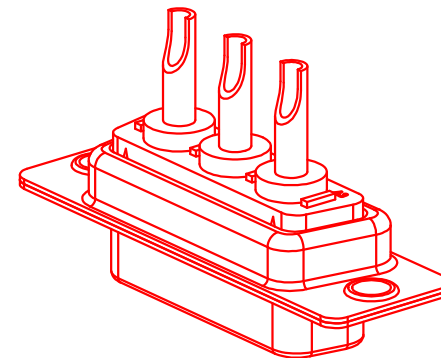
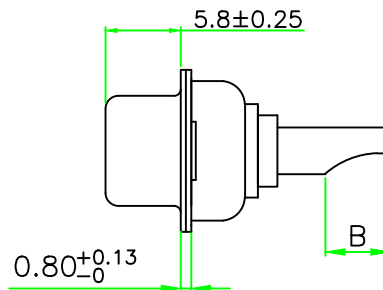
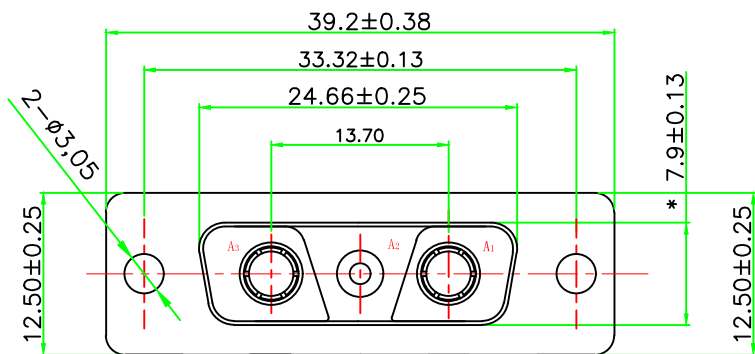


“*” Pivot Dimension

ROHS Component

PO(X)	A	B	WIRE	CURRENT RATING(A)
1	2.5	4.5	12#	10
2	3.6	5.0	10#	20
3	4.4	5.5	8#	30
4	5.5	5.5	6#	40



MATERIALS AND FINISH

SHELL:STEEL OR COPPER ALLOY MATERIAL, Tin/Ni OR Au FINISHED.
 CONNECTOR INSULATOR:PBT THERMOPLASTIC, 30% GLASS FILLED, UL 94V-0 RATED.
 HIGH POWER CONTACT :COPPER ALLOY MATERIAL, GOLD PLATED.

ELECTRICAL CHARACTERISTICS

HIGH POWER CONTACT CURRENT RATING:10, 20, 30 OR 40 AMPS.
 THE WORKING VOLTAGE:300V.
 HIGH POWER CONTACT RESISTANCE:2.7 MILLIOHMS MAX.
 DIELECTRIC WITHSTANDING VOLTAGE:1000 V AC FOR 1 MINUTE.
 INSULATION RESISTANCE:2000 MEGAOHMS MIN.
 TEMPERATURE RATING:-55° ~+125° .

TOLERANCE: X.X ±0.38 X.XX ±0.25 X.XXX ±0.13 X.° ±5° X.X° ±2°	DRAWN BY :	DATE :	PART NAME:	
		2009.03.30	3V3 母 电流焊线式传统铆合	
	CHECKED BY:	DATE :	DRAW NO.	
		2009.04.18	PART NO.	
UNIT: mm [inch] SCALE:1:1 SIZE: A4	APPROVED BY:	DATE :	REMARK	
		2009.04.18	MOLD NO.	