

WAFER

Poles: 2-16

Material: Post: Bass, Tin/Plated

Base: Nylon 66, UL94V-0

ELECTRICAL:

CURRENT RATING: 7.0A AC DC.

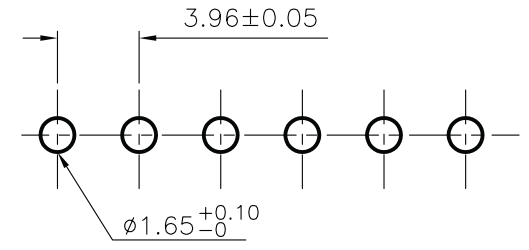
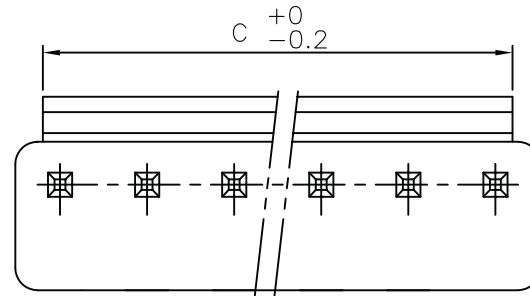
VOTAGE RATING: 250V AC DC.

TEMPERATURE RANGE: -25°C~+85°C.

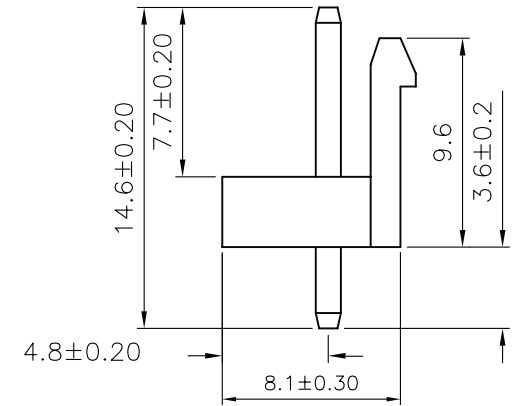
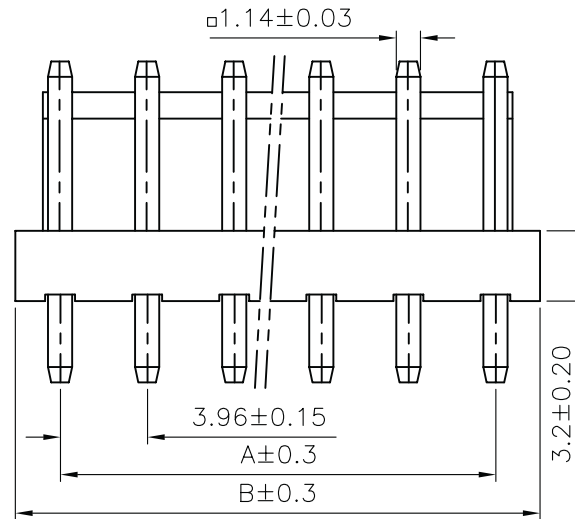
CONTACT RESISTANCE: 20m Ohm Max.

INSULATION RESISTANCE: 1000 M Ohm Min.

WITHSTANDING VOTAGE: 1500V AC/MINUTE.



P C B LAYOUT



| Poles | Part No. | Dimension in.(mm) | | |
|-------|---------------|-------------------|-------|-------|
| | | A | B | C |
| 2 | 3962-WS-02-LF | 3.96 | 7.86 | 5.36 |
| 3 | 3962-WS-03-LF | 7.92 | 11.82 | 9.32 |
| 4 | 3962-WS-04-LF | 11.88 | 15.78 | 13.28 |
| 5 | 3962-WS-05-LF | 15.84 | 19.74 | 17.24 |
| 6 | 3962-WS-06-LF | 19.80 | 23.70 | 21.20 |
| 7 | 3962-WS-07-LF | 23.76 | 27.66 | 25.16 |
| 8 | 3962-WS-08-LF | 27.72 | 31.62 | 29.12 |
| 9 | 3962-WS-09-LF | 31.68 | 35.58 | 33.08 |
| 10 | 3962-WS-10-LF | 35.64 | 39.54 | 37.04 |
| 11 | 3962-WS-11-LF | 39.60 | 43.50 | 41.00 |
| 12 | 3962-WS-12-LF | 43.56 | 47.46 | 44.96 |
| 13 | 3962-WS-13-LF | 47.52 | 51.42 | 48.92 |
| 14 | 3962-WS-14-LF | 51.48 | 55.38 | 52.88 |
| 15 | 3962-WS-15-LF | 55.44 | 59.34 | 56.84 |
| 16 | 3962-WS-16-LF | 59.40 | 63.30 | 60.80 |

| | | | | | | | |
|-----|------|------|--------|----------|--------------------|--------------|------|
| | | | | DRAWN: | GENERAL TOLERANCE: | | |
| E | | | | | | | |
| D | | | | | | | |
| C | | | | CHECKED: | UNIT: | | SIZE |
| B | | | | | SCALE: | | A4 |
| A | | | JECSON | | SHEET: | DESCRIPTION: | |
| REV | Date | FILE | BY | | PROJECTION: | PART NO: | |