

1

2

3

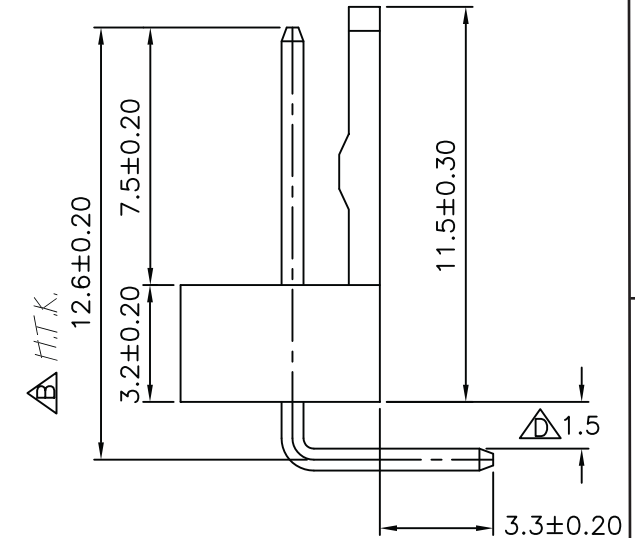
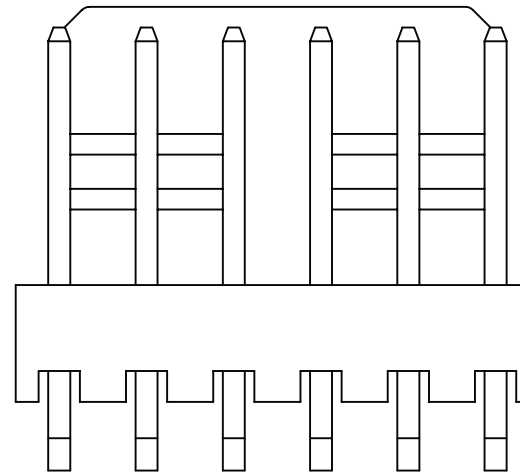
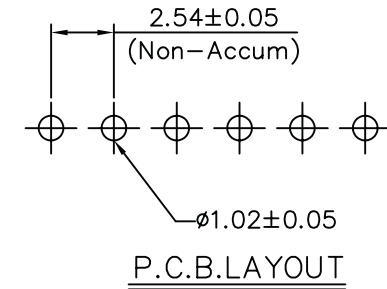
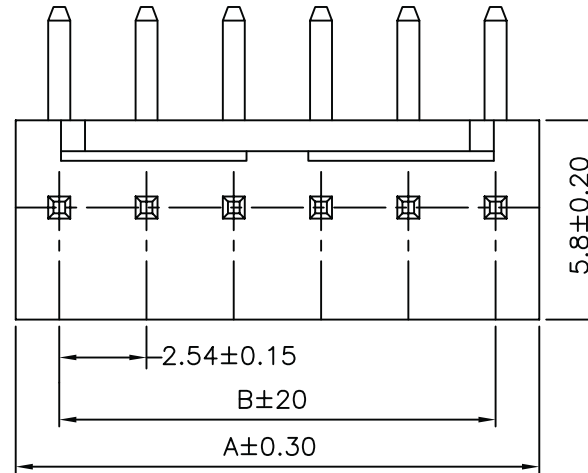
CONNECTOR

Poles: 2-20
 Material: Post: Brass, Tin/Plated
 Base: Nylon 66, UL94V-2
 COLOR: IVORY

SPECIFICATIONS

Voltage Rating: AC 250V
 Current Rating: AC DC 3A
 Withstand Voltage: AC 1000V/Min.
 Insulation Resistance: 1000MW Min.
 Temperature Range: -25°C ~ +85°C
 Contact Resistance: Initial Value/10mW Max.
 After Environmental Testing/20mW Max.

Poles	Part No.	Dimension in.(mm)	
		A	B
2	2542-WR-2	0.20(5.08)	0.10(2.54)
3	2542-WR-3	0.30(7.62)	0.20(5.08)
4	2542-WR-4	0.40(10.16)	0.30(7.62)
5	2542-WR-5	0.50(12.70)	0.40(10.16)
6	2542-WR-6	0.60(15.24)	0.50(12.70)
7	2542-WR-7	0.70(17.78)	0.60(15.24)
8	2542-WR-8	0.80(20.32)	0.70(17.78)
9	2542-WR-9	0.90(22.86)	0.80(20.32)
10	2542-WR-10	1.00(25.40)	0.90(22.86)
11	2542-WR-11	1.10(27.94)	1.00(25.40)
12	2542-WR-12	1.20(30.48)	1.10(27.94)
13	2542-WR-13	1.30(33.02)	1.20(30.48)
14	2542-WR-14	1.40(35.56)	1.30(33.02)
15	2542-WR-15	1.50(38.10)	1.40(35.56)
16	2542-WR-16	1.60(40.64)	1.50(38.10)
17	2542-WR-17	1.70(43.18)	1.60(40.64)
18	2542-WR-18	1.80(45.72)	1.70(43.18)
19	2542-WR-19	1.90(48.26)	1.80(45.72)
20	2542-WR-20	2.00(50.80)	1.90(48.26)



A

B

C

D